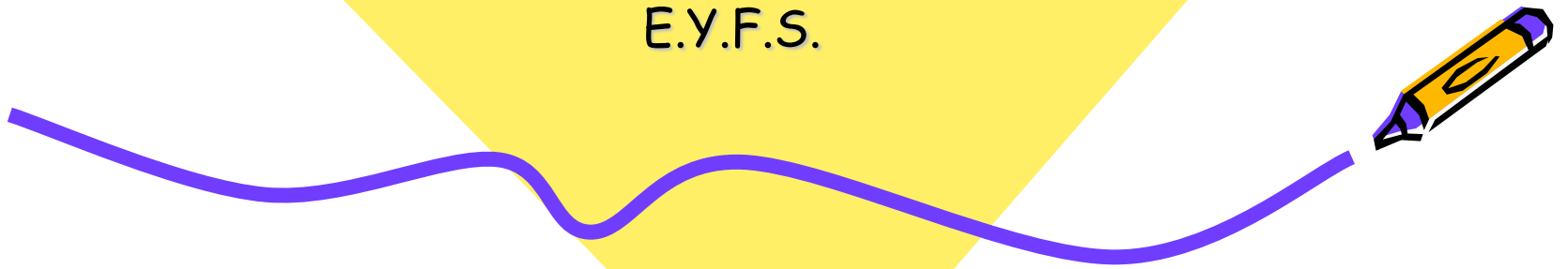




Welcome to

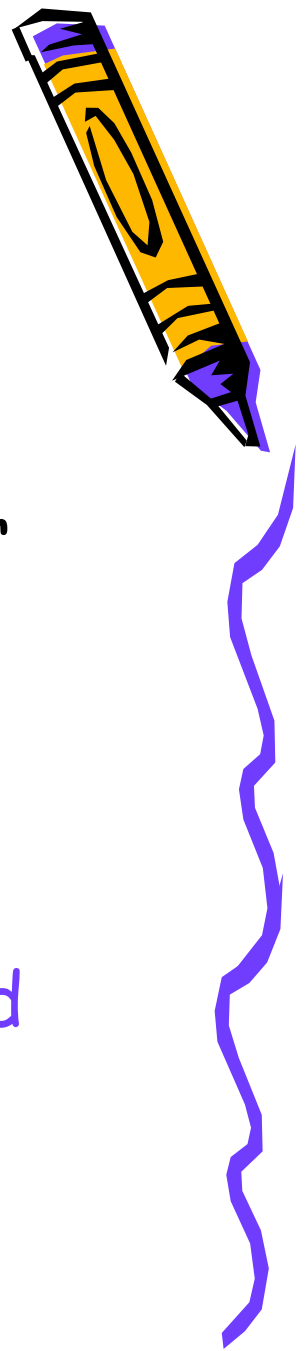
The Early Years Foundation Stage
E.Y.F.S.



What is the Early Years Foundation Stage?

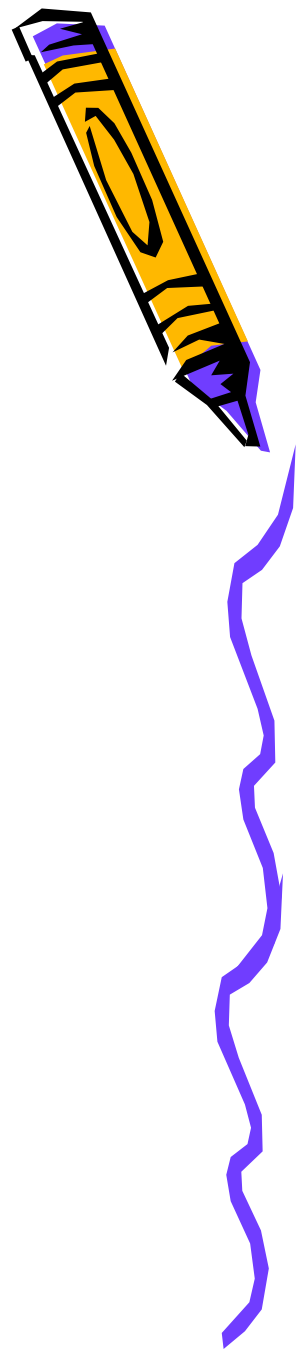
The Early Years Foundation Stage (E.Y.F.S.) is the stage of education for children from birth to the end of the Reception year.

It is based on the recognition that children learn best through play and active learning.



The E.Y.F.S. has 4 themes. These are:

- 1 A Unique Child
- 2 Positive Relationships
- 3 Enabling Environments
- 4 Learning and Development



Within the theme of Learning and Development there are six areas. All areas are connected to one another and are **equally important**.

1. Personal, Social and Emotional Development
2. Communication, Language & Literacy
3. Problem Solving, Reasoning and Numeracy
4. Knowledge & Understanding of the World
5. Physical Development
6. Creative Development



Personal, Social and Emotional Development



The children will be learning to:

- become self-confident;
- take an interest in things;
- know what their own needs are;
- dress and undress independently;
- become independent;
- tell the difference between right and wrong.



Communication, Language and Literacy



The children will be learning to:

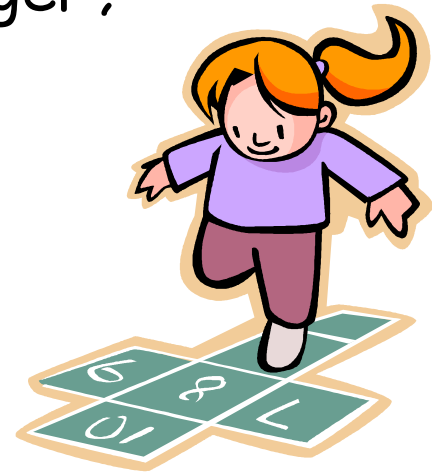
- talk confidently and clearly;
- enjoy listening to stories, songs and poems;
- hear and say sounds, and link them to the alphabet;
- read and write familiar words;
- learn to use a pencil effectively.



Problem Solving, Reasoning and Numeracy

The children will be learning to:

- develop an understanding of maths and problem solving through stories, songs, games and imaginative play;
- become comfortable with numbers and with ideas such as 'heavier than', 'longer' or 'bigger';
- be aware of shapes and space.



Knowledge and Understanding of the World



The children will:

- explore and find out about the world around them, asking questions about it;
- build with different materials, know about everyday technology and learn what it is used for;
- find out about past events in their lives and their families' lives;
- find out about different cultures and beliefs.



Creative Development



The children will explore:

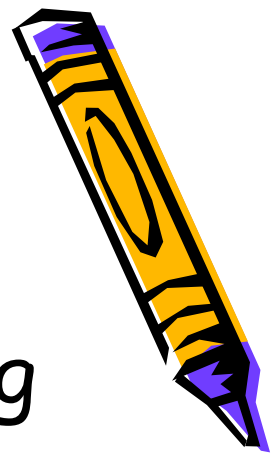
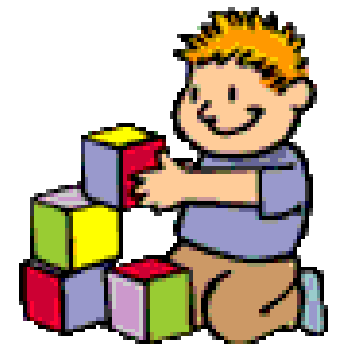
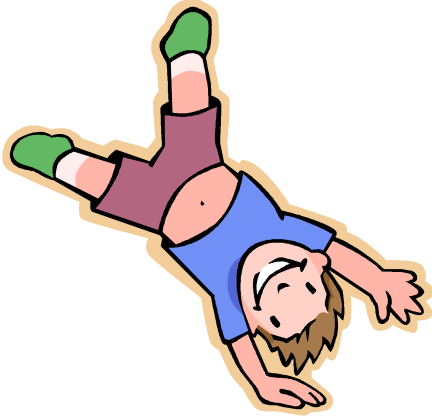
- colours and shapes;
- making things;
- role play;
- making music.



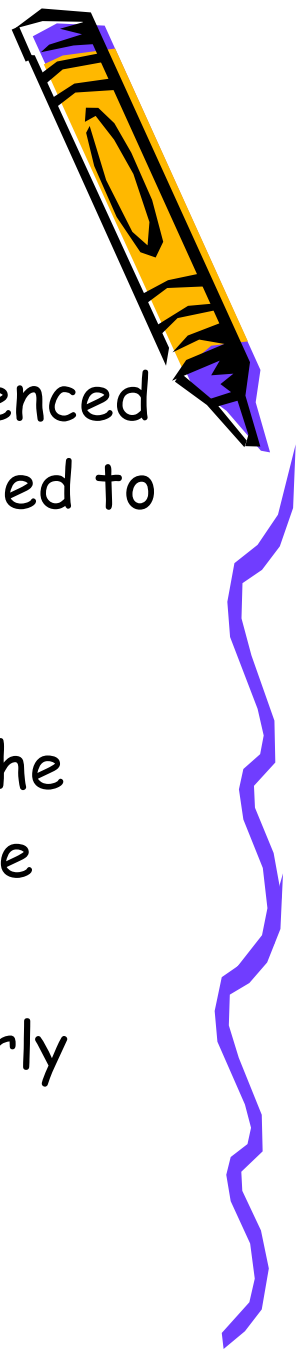
Physical Development

The children will be learning to:

- move confidently;
- control their body;
- handle equipment.



Monitoring Progress



Each child 's progress will monitored and evidenced with photos and observations. These will be used to produce a profile. This shows the child's development and further support.

The profile will be used to update a tracker. The tracker shows the child's progress towards the Early Learning Goals.

The profile and tracker will be updated regularly throughout the year.



The first few weeks

We will find out what the children
already know and can do

and use this information to help us develop adult
focused and child led activities for each child

*We would value any contributions
you would like to make in helping us
get to know your child's needs.*

*You can talk to your key worker who
will explain our 'Buddy card' system
and show you where her pigeon hole is so that you
can leave messages for her in there.*



"Adults who help children to play are adults who help children to learn."

